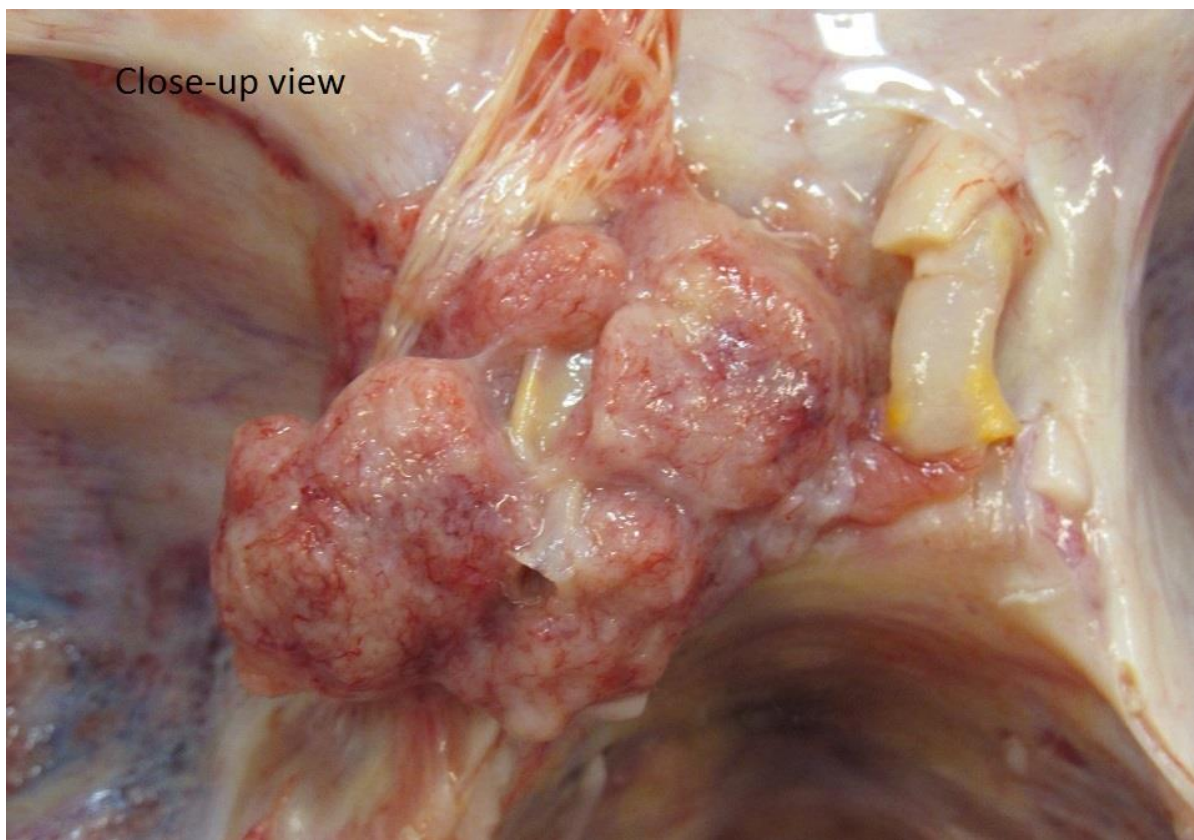
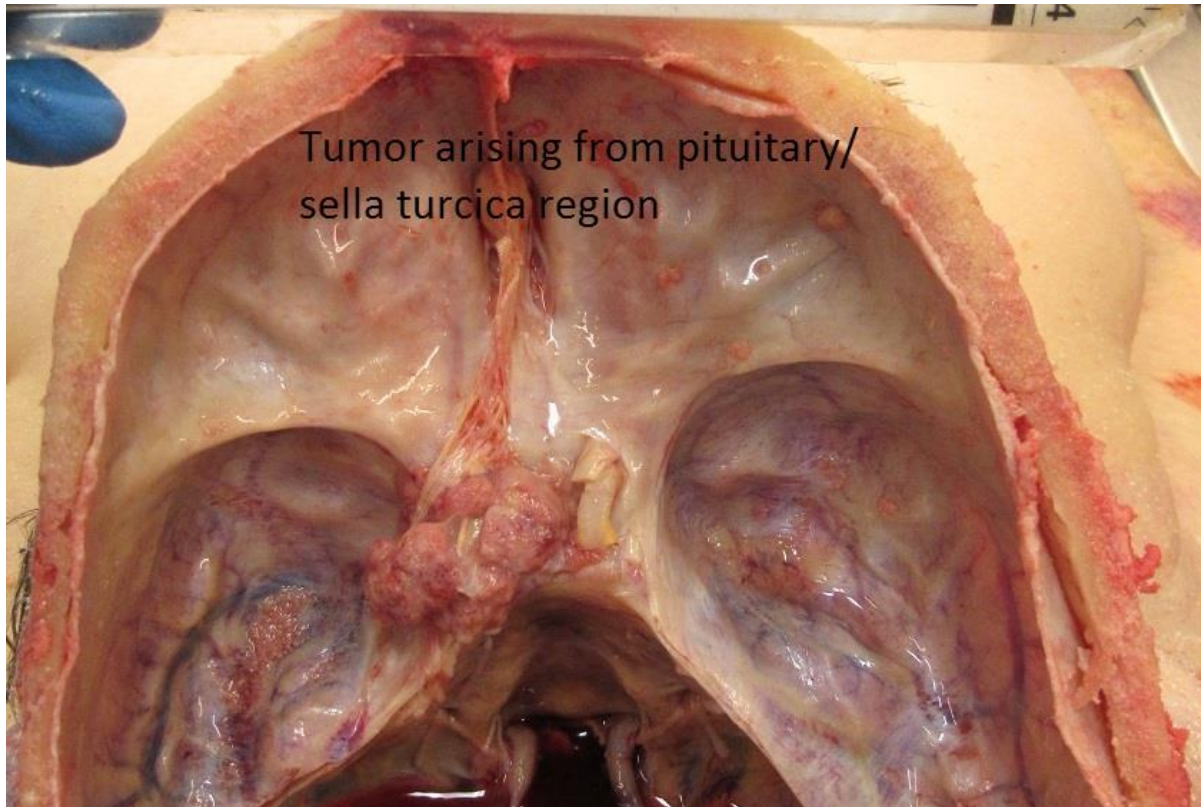


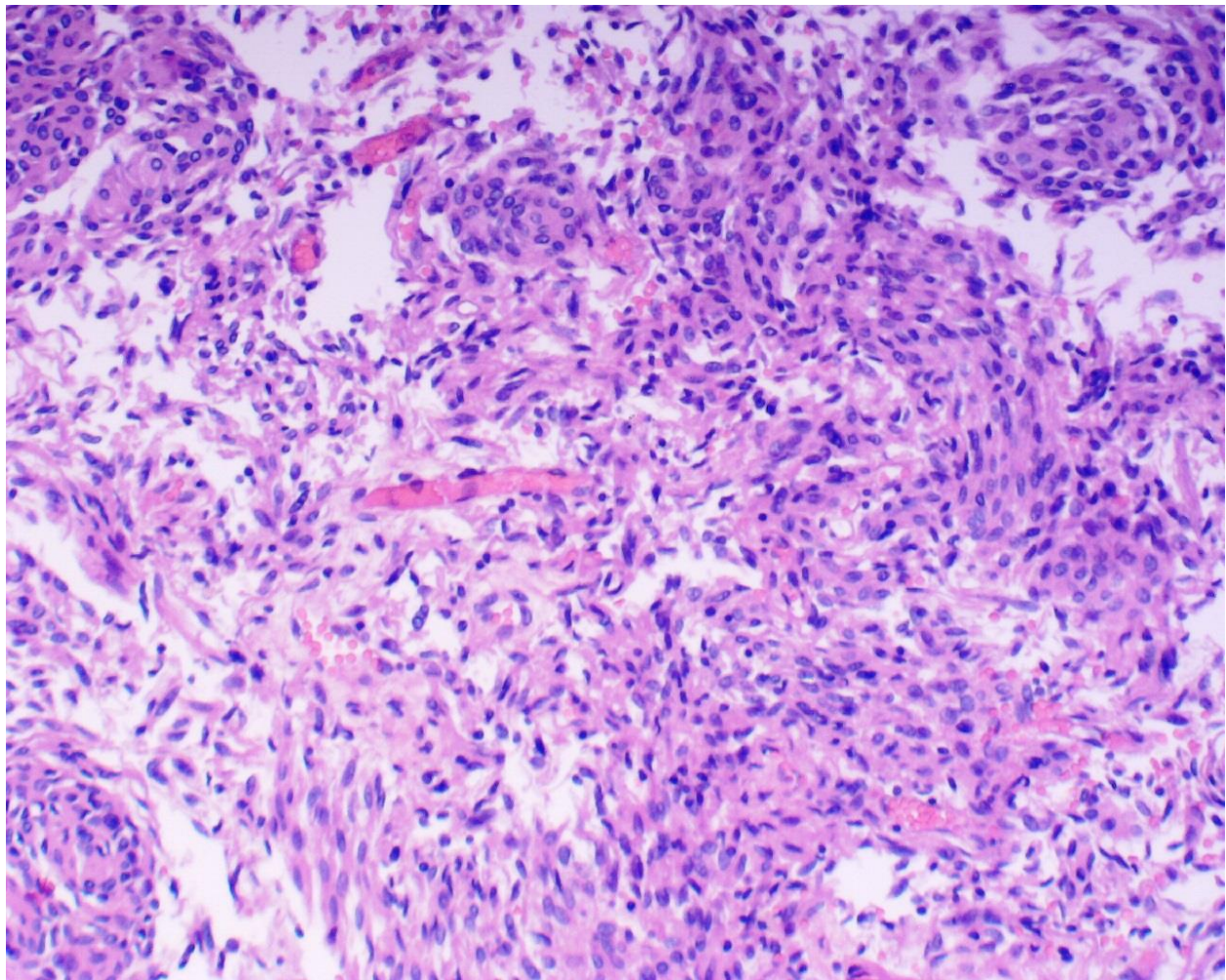
**72-year-old female with three-month history of worsening headaches and significant vision changes.**



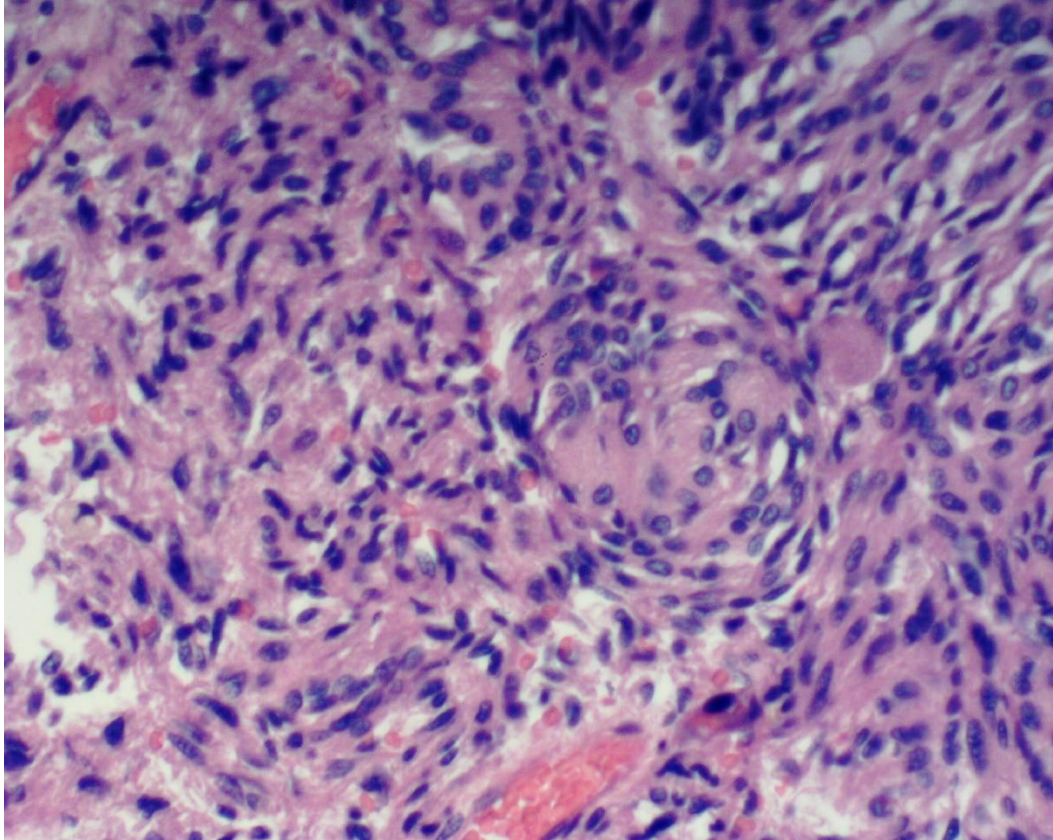
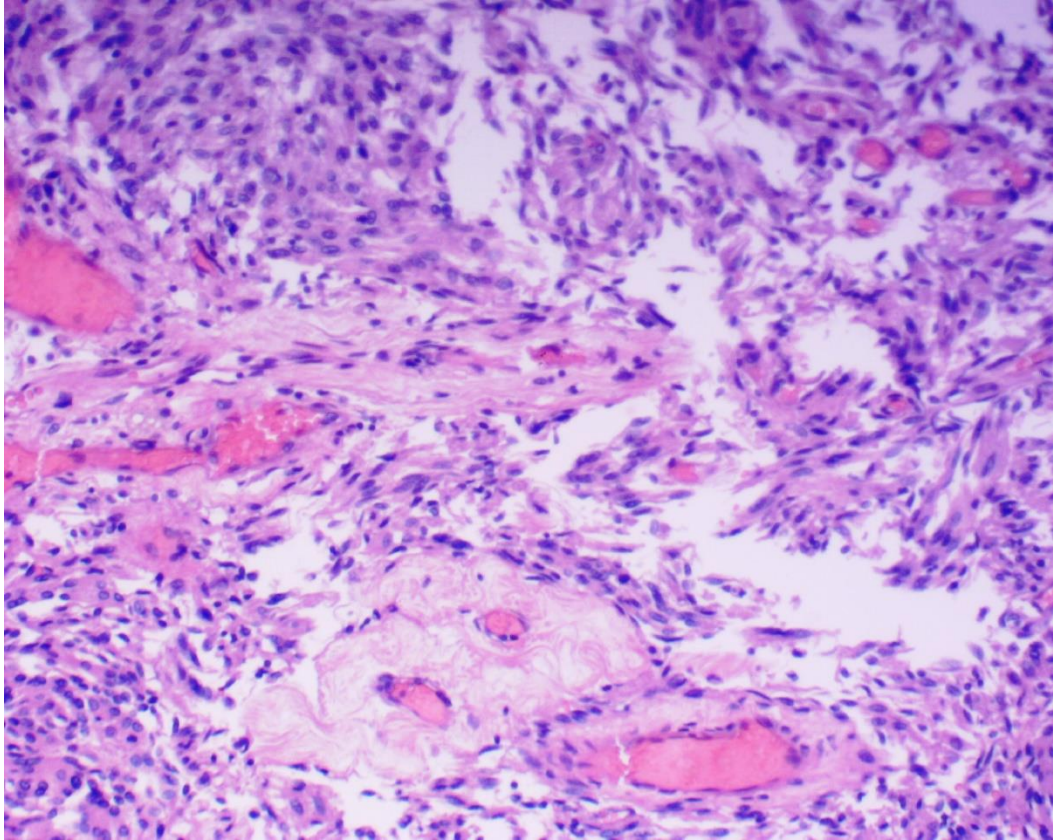
## **Discussion:**

Initially, the mass was thought to be arising from the pituitary gland. A careful dissection showed that the tumor appeared to be arising from the diaphragm sellae and the stalk of the pituitary. The pituitary itself was grossly unremarkable. The tumor mass measured 3 x 2 x 1 cm, compressing optic chiasm and left optic tract, and adjacent brain tissue (hypothalamus). Limited clinical tests of pituitary function were either borderline or normal.

Even though meningiomas exhibit a wide range of histologic patterns, overall impression is most likely a meningioma arising from the basal skull, not a pituitary tumor, based on the gross and microscopic features. No further workup was conducted.



**Histology (Medium power)**



*Contributed by Dr. John Hu*